



Fixed castor ESF 301 ZK


Extra Heavy Duty Series ED - Wheel Z


 -30 °C - +80 °C


 swivels easily


 wear resistant


 shock proof


 floor protective


 weather proof

Wheel



Tread: Cast polyurethane, 95±3 Shore A

Wheel centre, Cast-iron - painted

Fork

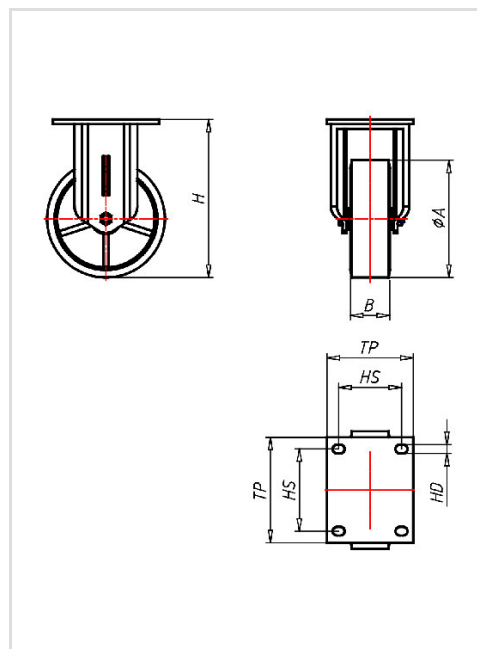


For applications where a super strong and durable caster is required,
 one tapered roller and one axial ball bearing,
 dust protection ring,
 very strong integrated Kingpin,
 locked nut, grease nipple, wheel axle bolted,
 finish – painted

Fixed castor	Wheel-Ø A x width B mm: 300x100
Load Capacity kg:	2800
Load capacity tested according to EN 12530 and EN 12527	
Overall height H mm:	380
Dimension of top plate TP mm:	255x205
Hole spacing HS mm:	210x160
Hole-Ø HD mm:	17
Wheel bearing:	Ball bearing

Advantages

- ✓ silent in motion
- ✓ low rolling resistance
- ✓ high abrasion and tear resistance
- ✓ high resistance to shocks
- ✓ good chemical resistance



Applications

- Metal-Technology
- Heavy duty dollies
- Trash container trucks
- Machinery moving dollies
- Workshops
- Racks
- Building-Industry
- Carpentry